

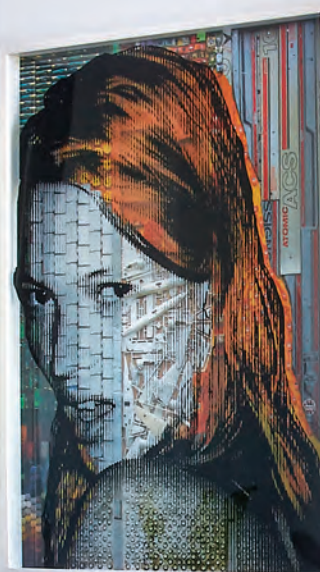
NYC & G

New York Cottages and Gardens

COTTAGESGARDENS.COM | MAY/JUNE 2016

THE APARTMENT ISSUE

BUSHWICK
CENTRAL
PARK WEST
GRAMERCY PARK
KIPS BAY
UPPER
EAST SIDE





SHOP TALK

DESIGN DISCOVERIES FROM NEW YORK AND BEYOND



BUDDING BEAUTIES

Now that it's time for abundant May flowers, do them justice in a gorgeous vessel, such as Laliq's brand-new Géo vase, designed by Swiss architect Mario Botta and patterned after the Palazzo dei Diamanti in Ferrara, Italy. The limited-edition vase comes in midnight blue (pictured here), black, and clear crystal. Meanwhile, if just a stem or two will do, turn the page for a passel of fabulous bud vases! \$54,000, 609 Madison Ave., NYC, 212-355-6550, laliq.com.

MARKET EDITOR: HANIYA RAE

SHOP TALK



GRAY MATTERS

Japan, meet Finland: This gray ombre blown-glass vase, designed by Issey Miyake for Iittala, is the essence of cross-cultural collaboration. *\$95, at MoMA Store, 44 W. 53rd St., NYC, 212-767-1050, momastore.org*



MULTIFACETED

The tan Sugahara Ginette glass is finished by hand and features a thick base that makes it difficult to knock over. Available in four colors. *\$43, at Still House, 117 E. 7th St., NYC, 212-539-0200, stillhousenyc.com.*



HUE KNEW?

Prague-based designers Michaela Tomiskova and Jakub Jandourek blow their glass vessels into beechwood molds to achieve stunning gradations of color. *\$225, at ABC Carpet & Home, 888 Bway, NYC, 212-473-3000, abchome.com.*



THE JOY OF HEX

Now available at the brand-new Seguso showroom in the NYDC: deeply hued Murano glasses called Esagonali (that's Italian for "hexagonal"). Available in six colors. *\$180 a glass or \$1,080 for a set of six, 200 Lexington Ave., Ste. 431, NYC, 212-696-1133, seguso.com.*



TULIP MANIA

Have a meta moment with Simon Pearce's Nowlan tulip vase, designed to accommodate particularly top-heavy blossoms. *\$220, at La Terrine, 280 Columbus Ave., NYC, 212-362-2122, laterrinedirect.com.*



STICK TO THE RIBS

Designed in the U.K. by Hilary Green for Dartington, the Wibble Heather vase accommodates a handful of short stems quite nicely. *\$30, at Gracious Home, 1220 Third Ave., NYC, 212-517-6300, gracioushome.com.*

DECO REDUX

1 POTS OF GOLD

Made of turned red clay, black enamel, and hand-painted gold, Roche Bobois's Anneaux vases ring true, no matter what the era. *\$740 each, 200 Madison Ave, NYC, 212-889-0700, roche-bobois.com.*

2 EASEL DOES IT

Elevate a small painting or framed print—literally and figuratively—on this sumptuous Italian easel made of black Plexiglas and brass. *\$1,400, at Flair, 88 Grand St, NYC, 212-274-1750, flairbomecollection.com.*

3 SHAPE OF THINGS TO COME

The Deco lines on the new lacquered mahogany Delia console at John Rosselli & Associates are thoroughly modern in any interior. *\$4,200 (also available in oak), D&D, 979 Third Ave, Ste. 1800, NYC, 212-593-2060, johnrosselli.com.*

4 CAKE WALK

The three-tier bone-china Arc cake stand from Richard Brendon is a study in sleek design. How sweet! *\$470, at Bergdorf Goodman, 754 Fifth Ave, NYC, 212-753-7300, bergdorfgoodman.com.*

5 MEANDERING ALONG

Furniture designer Tim Gosling played with overlapping rectangles to create the heady, hand-knotted Tibetan wool-and-silk Deco Spiral rug. *\$145 per sq. ft., at The Rug Company, 219 E. 59th St, NYC, 212-644-9200, iberugcompany.com.*



BROOM SERVICE

Business is booming for British designer Lee Broom, who's expanding into the New York market with a 2,000-square-foot pop-up, Broom Off Broome, open May 12 through June 10. Set within an industrial space graced with Georgian-style architectural fragments, the store includes 50 of Broom's signature lighting, furniture, and accessory pieces, like his Mini Crescent chandelier (left), made from brushed brass and opaque glass globes. "Launching in New York has been a dream come true," says Broom. "I wanted to create something that the city hasn't seen before." 63 Greene St, NYC, leebroom.com. —Haniya Rae



BY JO, WE THINK SHE'S GOT IT!

The English perfume maven Jo Malone has tapped artist and wallpaper designer Marthe Armitage (above) to create a brand-new print to adorn the company's limited-edition Summer Afternoon collection of drawer liners, candles, soaps, and bath oils. Inspired by English gardens, the fanciful scene is replete with foxes, lions, bees, and croquet players, which started out as "pencil drawings on paper before being turned into linocut patterns in three colorways," says Armitage. "It was such a fun project to work on." 330 Bleecker St, NYC, 212-242-1454, jomalone.com. —H. R.

NEW IN TOWN: ARHAUS

The furnishings company Arhaus has put down roots in Roslyn, where it's occupying the circa-1940 Port Motors automobile showroom. The 19,000-square-foot space boasts an alfresco sitting area where outdoor wares will be displayed, plus a garden center—a first for the brand, which also has a location in Manhattan's Meatpacking District and 59 other stores nationwide. "Many of the building's original features, such as exposed brick walls and oak floors, are incorporated into the design scheme," says Gary Babcock, Arhaus's chief creative officer. "We also added a number of antique pieces, including a cast-iron staircase from Parma, Italy, and a large Belgian mantel imported from France." 15 Port Washington Blvd., Roslyn, 516-627-5498, arhaus.com. —H. R.

ARHAUS: GOMER THOMAS

